

# Manage Board Data

Home > WebEOC > Guide - Maps > Manage Board Data

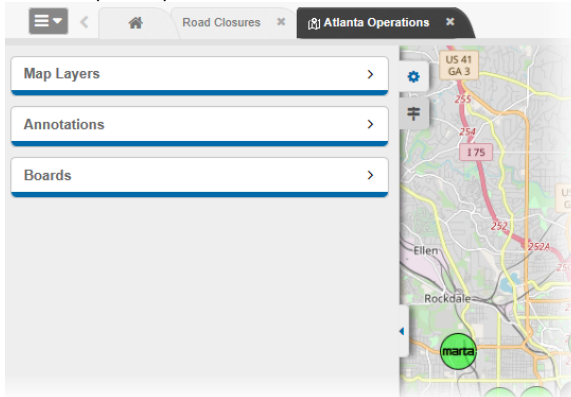


You can easily change what boards are showing data on a map, creating custom map views. This customizability reduces clutter and makes viewing selective data possible.

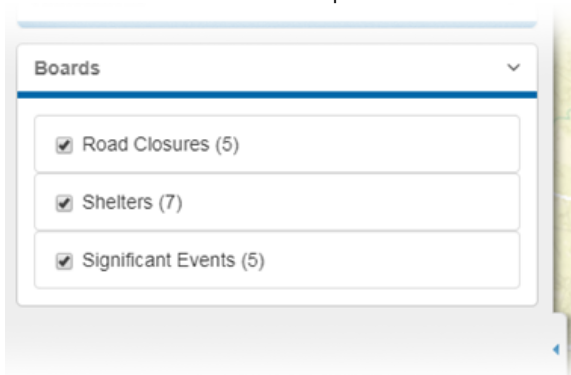
**Note:** The boards available to you in the Boards section depend on your permissions and the boards to which administrators have assigned you.

## To turn on or off board data on the map

1. From an open map, on the left, click the arrow tab. The side navigation menu opens.



2. Click **Boards**. The *Boards* section expands.



3. Select the check box associated with any and all boards you want contributing data to the map.  
*Tip: When a board is selected, the number of mapped records in that board appears in parentheses next to the map's name.*
4. Clear the check box associated with any and all boards you do not want data pulled from into the map.

### Helpful Links

[Juvare.com](#)

[Juvare Training Center](#)

[Announcements](#)

[Community Resources](#)