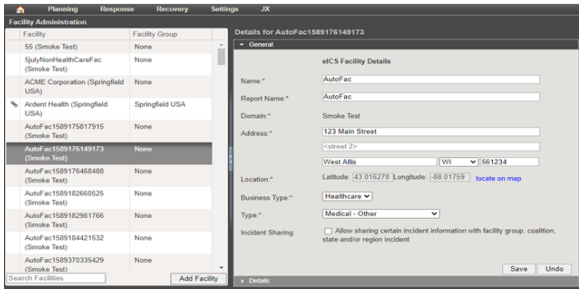


About Facilities

Home > eICS > Guide - Facilities > About Facilities



A facility is an entity that represents an individual organized unit, such as a hospital, EMS agency, corporation, or institution. Each facility is a member of one domain and can be associated with zero, one, or multiple health systems.



Business types include healthcare, education, and other. Facilities select from the business types available through their domain. Business types determine certain terminology, as well as the relevant type of facility and plans that best suit a facility. Further, when using eICS in conjunction with Juvare Exchange, the type of facility in eICS matches with facility types and subtypes in Juvare Exchange.

As a Domain Administrator, when you [add a facility](#), you may also indicate its available ICS plans. You may also be able to [unlock the plan's chart](#), allowing facility administrators to customize the plan's chain of command. If you make only one plan available to the facility, that is its active plan by default. If you granted access to multiple plans, you can change a facility's active plan from the *Plan Summary*.

You can customize incident dashboard tabs for each facility. For more details, refer to [Custom Incident Dashboard Tabs](#).

Helpful Links

- [Juvare.com](#)
- [Juvare Training Center](#)
- [Announcements](#)
- [Community Resources](#)