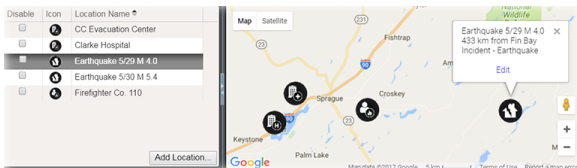


# Incident Dashboard Map

Home > eICS > Guide - Exploring eICS > Incident Dashboard Map



On the Incident Dashboard, the **Map** tab lists and displays locations that were set up during planning, through the IRG, and/or added during response. Basic information and the option to edit locations are easily accessed by clicking the location icon.



## Helpful Links

- [Juvare.com](#)
- [Juvare Training Center](#)
- [Announcements](#)
- [Community Resources](#)

## Elements

Element	Description	Actions
List	Locations for this incident	<ul style="list-style-type: none"><li>• Disable Location</li><li>• Add Location</li></ul>
Map	Incident location	Edit Location  <b>Note:</b> When shared with JX, the Incident location type must be defined.
Details	<ul style="list-style-type: none"><li>• Description</li><li>• Type</li><li>• Address</li></ul>	Set Lat/Long from Address

## Options

Note the following about map features:

- **Google™ Controls** – The map employs standard Google controls; use these to move the focus in the map, zoom in and out, and view variations on the map, such as a satellite or hybrid view.
- **Icon** – Each type of location is associated with a particular icon. This icon marks the location in the map.
- **Latitude and Longitude** – – When adding or editing a location, you can change its position on the map by dragging the icon on the map to a new place. Doing this automatically updates the **L**atitude and **L**ongitude fields, but not the address fields. Remember to update the address as well by clicking the up arrow icon.

**Note:** When shared with JX, the Incident location type must be defined.